

Approximate Gross Internal Area

678 sq ft - 63 sq m

Bathroom

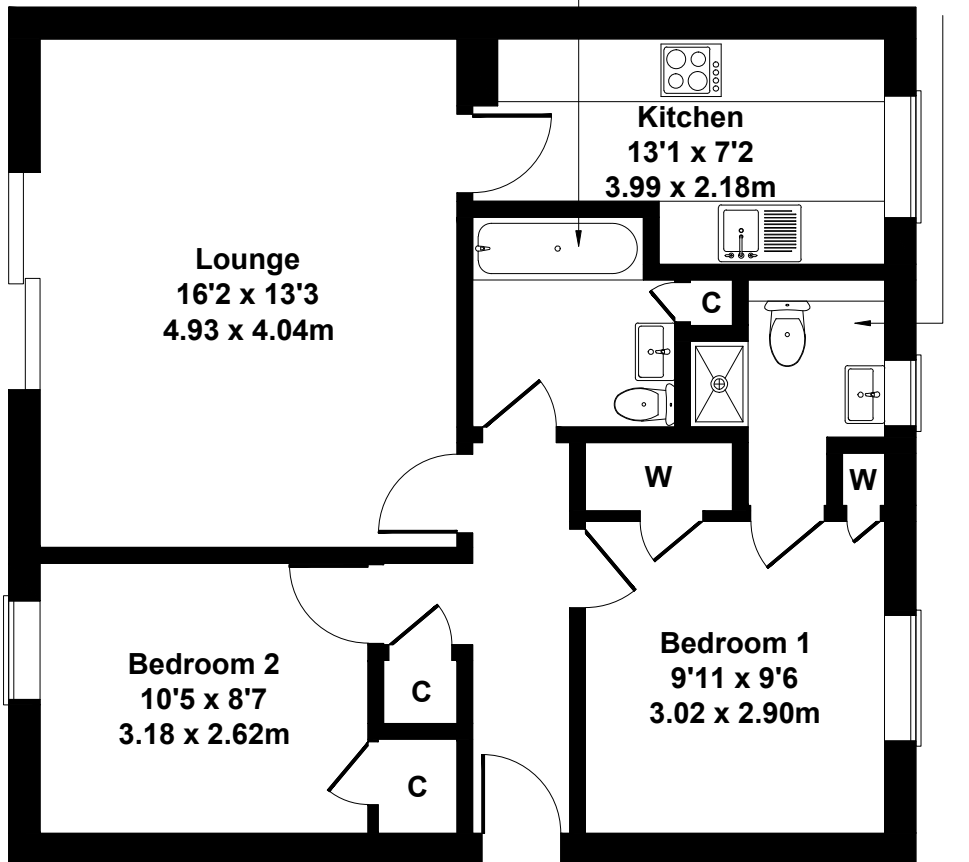
6'8 x 5'5

2.03 x 1.65m

En-suite

5'0 x 3'11

1.52 x 1.19m



SKETCH PLAN FOR ILLUSTRATIVE PURPOSES ONLY

All measurements walls, doors, windows, fittings and appliances, their sizes and locations, are approximate only. They cannot be regarded as being a representation by the seller, nor their agent.